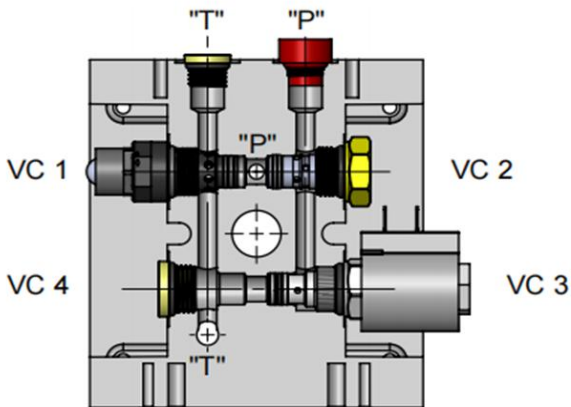
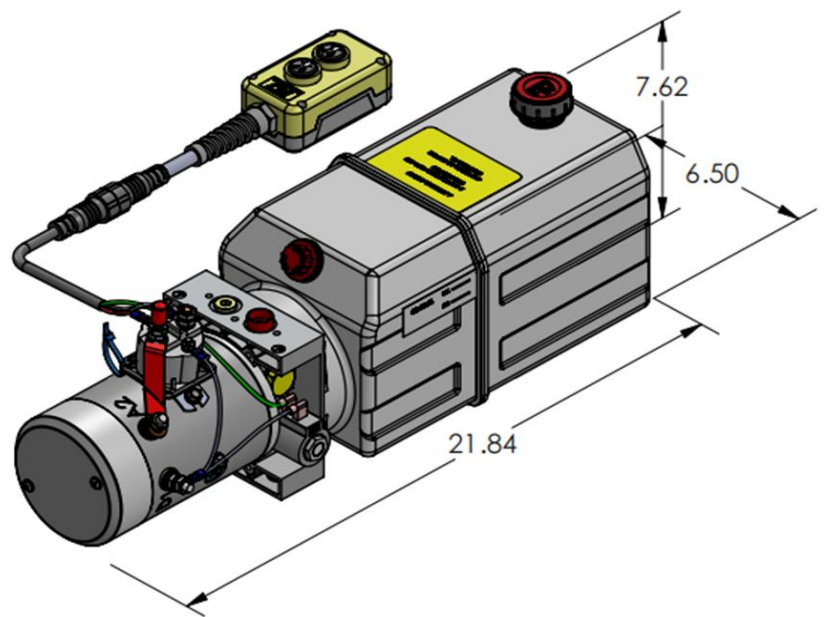


HYDRAULIC CIRCUIT 103



CAVITY 1: CARTRIDGE RELIEF VALVE  
 CAVITY 2: CARTRIDGE CHECK VALVE  
 CAVITY 3: NC 2W2P SOLENOID VALVE  
 CAVITY 4: VALVE PLUG



AS SHOWN:  
 MOTOR: 12V DC  
 MANIFOLD: UNIVERSAL MANIFOLD I®.  
 PUMP: PL SERIES  
 RESERVOIR: 6 QT PLASTIC

HYDRAULIC CIRCUIT 103:

**MOTOR**

OD 3.0" 12V DC  
 OD 4.5" 12/24V DC  
 OD 5.0" 12/24V DC  
 1/2 HP--5 HP AC

**PUMP**

PL	IN <sup>3</sup>
0.6	0.0384
6.0	0.3681

**RESERVOIR**

PLASTIC RESERVOIR  
 3 QT----14 QT

STEEL RESERVOIR  
 1.5 QT----7 GALLON

**MOUNTING**

HORIZONTAL  
 VERTICAL

**MISC**

DC START SWITCH  
 REMOTE PENDANT