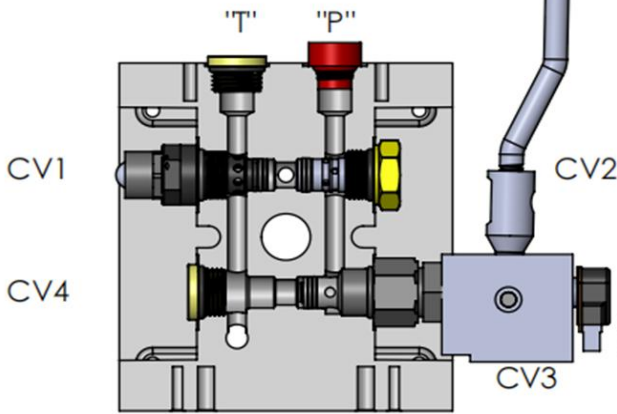


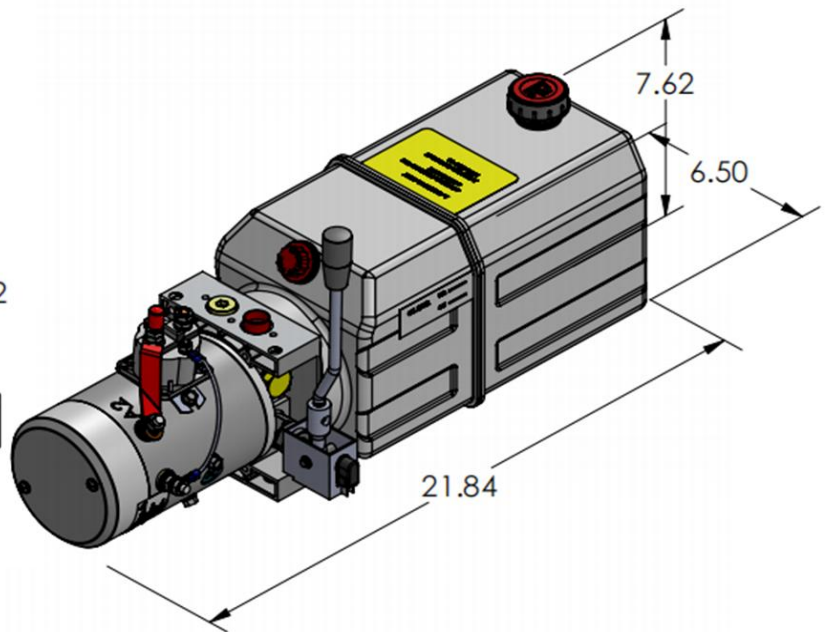
HYDRAULIC CIRCUIT 106



CAVITY 1: CARTRIDGE RELIEF VALVE
 CAVITY 2: CARTRIDGE CHECK VALVE
 CAVITY 3: MANUAL OPERATE POWER UP,
 GRAVITY DOWN VALVE
 CAVITY 4: VALVE PLUG

DESCRIPTION:

Universal Manifold I, Hydraulic Circuit 106.
 Base lift, check, and manual three position valve.
 Motor, Universal Manifold I® (with cartridge relief
 valve, cartridge check valve, manual operate power up,
 regulated gravity down), Pump, Tank.
 "P" & "T" SAE #6(9/16-18) O-ring ports.



AS SHOWN:
 MOTOR: 12V DC
 MANIFOLD: UNIVERSAL MANIFOLD I®.
 PUMP: PL SERIES
 RESERVOIR: 6 QT PLASTIC

HYDRAULIC CIRCUIT 106:

MOTOR

OD 3.0" 12V DC
 OD 4.5" 12/24V DC
 OD 5.0" 12/24V DC
 1/2 HP--5 HP AC

PUMP

PL IN³
 0.6 0.0384
 | |
 6.0 0.3681

RESERVOIR

PLASTIC RESERVOIR
 3 QT----14 QT
 STEEL RESERVOIR
 1.5 QT----7 GALLON

MOUNTING

HORIZONTAL
 VERTICAL

MISC

DC START SWITCH