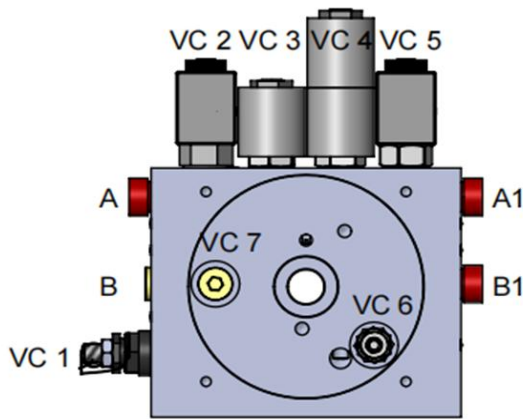


HYDRAULIC CIRCUIT 215



VIEW FROM RESERVOIR SIDE

- CAVITY 1: CARTRIDGE RELIEF VALVE
- CAVITY 2: NC 2WAY VALVE
- CAVITY 3: 4W2P SPOOL TYPE CARTRIDGE SOLENOID VALVE
- CAVITY 4: 4W3P MOTOR CENTER, CARTRIDGE SOLENOID VALVE
- CAVITY 5: PROPRIETARY LOAD HOLDING VALVE
- CAVITY 6: 2ND RELIEF VALVE
- CAVITY 7: PLUG

HYDRAULIC CIRCUIT 215:

MOTOR

OD 3.0" 12V DC
OD 4.5" 12/24V DC

PUMP

PL	IN ³
0.6	0.0384
6.0	0.3681

RESERVOIR

PLASTIC RESERVOIR
3 QT----14 QT

STEEL RESERVOIR
1.5 QT----20 QT

MOUNTING

HORIZONTAL
VERTICAL

MISC

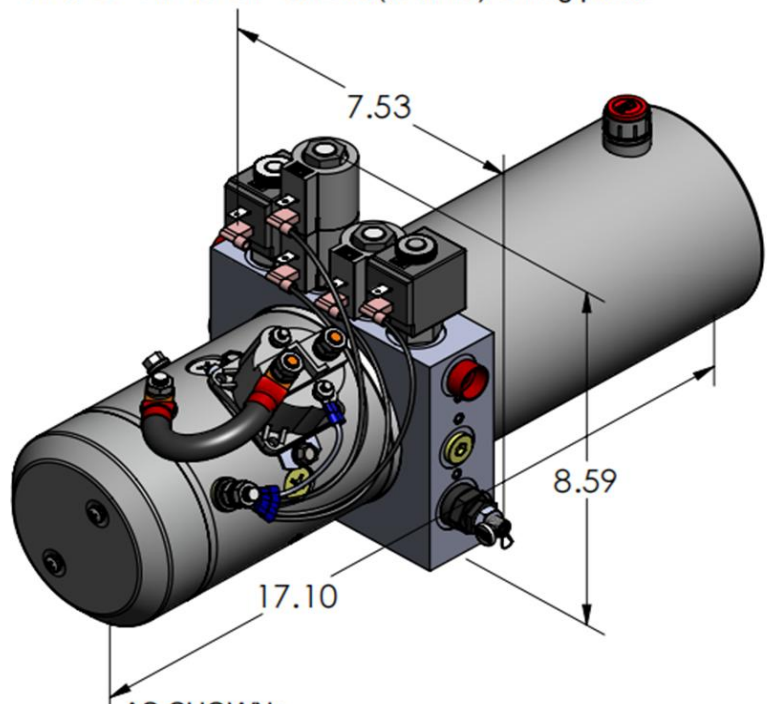
DC START SWITCH
REMOTE PENDANT

DESCRIPTION:

Universal Manifold III, Hydraulic Circuit 215. With Independent operation of a double action function & single acting function power unit.

Motor, Manifold® (with cartridge relief valve, NC 2way valve, 4w2p spool type cartridge solenoid valve, 4w3p motor center cartridge solenoid valve, proprietary load holding valve, secondary relief valve), Pump, Tank.

"A" & "B" "A1" & "B1" SAE #6(9/16-18) O-ring ports.



AS SHOWN:

MOTOR: 12V DC
MANIFOLD: MANIFOLD® III.
PUMP: PL SERIES
RESERVOIR: 2 QT STEEL