

Type VT shuttle valves

- Shuttle valves
- Ball type

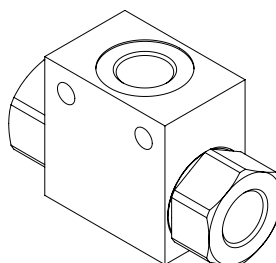
Port size
VT 14

Type	Selection 1	Selection 2	Nominal flow	Max. pressure	ports	weight
			l/min(US gpm)	bar(psi)		Kg(lb)
VT 14	-	-	35(9.3)	350(5100)	All G 1/4	0.27 (0.59)
VT 38			50(13.2)	350(5100)	All G 3/8	0.464 (1.02)
VT 12			90(23.8)	350(5100)	All G1/2	0.74 (1.63)
VT 34			140(37)	350(5100)	All G3/4	1.406 (3.1)
VT 100			180(47.6)	350(5100)	All G1"	1.87 (4.12)

Hydraulic diagram	Type	Execution	Operation/ Features	Max. flow up to		Max.press. up to	
				l/min	US gpm	bar	psi
	VT	ball type		180	47.6	350	5100

Ordering codes and description

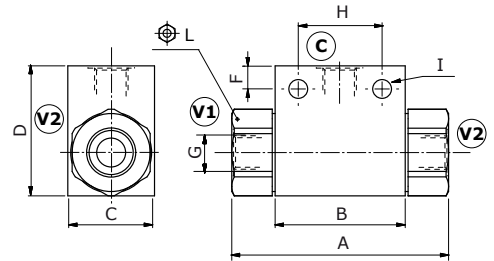
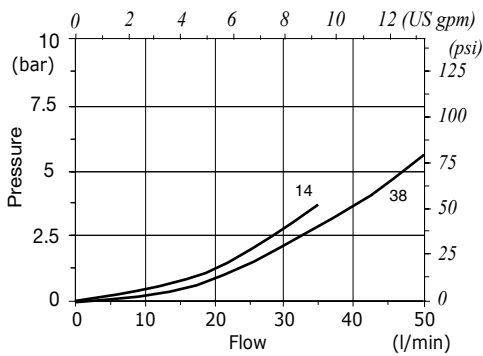
Port size
VT 14



VT
Dimensions

Dimensions are in mm-in

Valve type	A	B	C	D	E	F	G	H	I	⌀L
VT 14	69 2.71	36 1.42	25 0.98	35 1.38	22.5 0.88	7 0.27	G 1/4	25 0.98	6 0.24	22
VT 38	75 2.95	45 1.77	30 1.18	45 1.77	30 1.18	8 0.31	G 3/8	29 1.14	6.5 0.25	27
VT 12	94 3.7	57 2.24	35 1.38	50 1.97	32 1.26	9 0.35	G 1/2	36 1.42	5.5 0.22	30
VT 34	100 3.94	65 2.56	50 1.97	60 2.36	37.5 1.48	6.5 0.25	G 3/4	50 1.97	6.5 0.25	41
VT 100	126 4.96	80 3.15	50 1.97	80 3.15	54.5 2.14	11 0.43	G 1	60 2.36	10.5 0.41	46


Rating diagrams
VT14-38 pressure drop vs. flow

VT12-34-100 pressure drop vs. flow
