

## Type VRSE..CIL pilot operated check valves

- Single acting
- Bolt connection

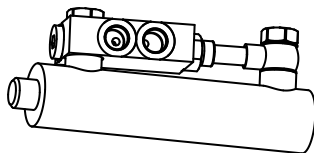
**VRSE 02 CIL**  
 Port size  
 - without mounting hole  
**FF** with mounting hole

Type	Selection 1	Selection 2	Nominal flow	Max. pressure	ports	weight
			l/min(US gpm)	bar(psi)		Kg(lb)
VRSE01CIL	FF/ -	-	20 (5.3)	300 (4350)	All G1/4	0.45 (0.99)
VRSE02CIL			20 (5.3)	300 (4350)	All G3/8	0.65 (1.43)

Hydraulic diagram	Type	Execution	Operation/ Features	Max. flow up to		Max.press. up to	
				l/min	US gpm	bar	psi
	<b>VRSE..CIL</b>		single acting, bolt connection	20	5.3	300 steel body	4350 steel body

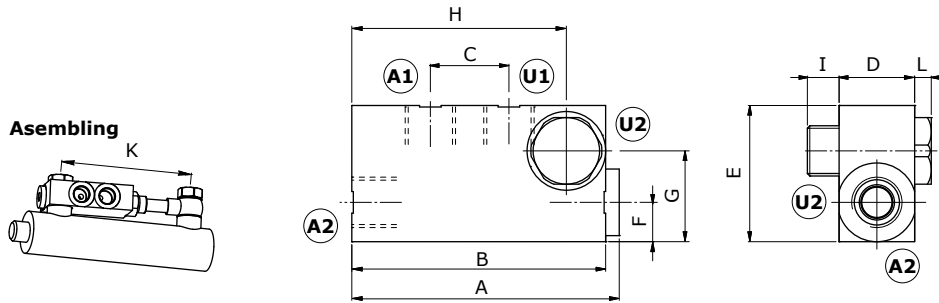
### Ordering codes and description

**VRSE 02 CIL**  
 Port size  
 - without mounting hole  
**FF** with mounting hole



#### Selection 1

TYPE	DESCRIPTION
-	without mounting hole
FF	with mounting hole

**Dimensions**


Dimensions are in mm-in

Valve type	A	B	C	D	E	F	G	H	I	L	K min
VRSE01CIL	88.5-3.48	84-3.31	24-0.94	20-0.79	40-1.57	10-0.39	27-1.06	68.5-2.7	10-0.39	6-0.23	123-4.84
VRSE01CIL	90.5-3.56	86-3.38	29-1.14	25-0.98	45-1.77	12-0.47	31-1.22	72-2.83	11-0.43	7-0.27	127-5

**Rating diagrams**
